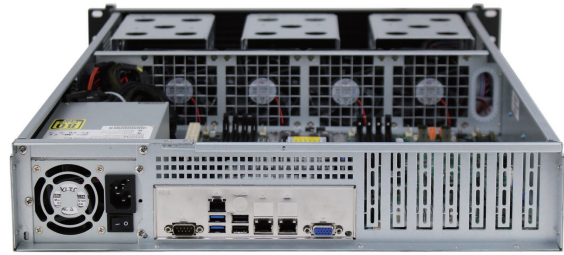


# AREMO-2199-MX 19" 2U industrial rack-mount chassis



The AREMO-2199-MX uses a 2U rack-mount form factor and is designed for ATX/MicroATX/Mini-ITX Motherboard. Also, build two USB interfaces on the front panel. AREMO-2199-MX can equip high-wattage 2U form factor PSU. AREMO-2199-MX is suitable for Factory and Server applications.

## FEATURES

- 9x 3.5" HDD Drive bays (Or 3x 2.5" HDD/SSD)
- Four 8cm ball-bearing cooling fans for better ventilation
- Two USB2 ports on the front panel
- All I/O ports, Buttons, LEDs, Drive bays, AC inlet located on the front side

## ORDERING GUIDE

- **AREMO-2199-MX**  
19" 2U rack-mount chassis for M/B

## GENERAL

|                 |  |
|-----------------|--|
| Construction    | Heavy-duty steel with aluminum front panel             |
| Drive Bay       | 9x 3.5" HDD( or 3x 2.5" HDD/SSD)                       |
| Cooling Fan     | 4x 8cm ball-bearing cooling fans                       |
| Indicator       | 1x Power On/Off LED, 1x HDD LED                        |
| Switch          | 1x Power On/Off, 1x System reset                       |
| Connector       | 2x USB ports on the front panel                        |
| Expansion slots | 7x half-size PCI/PCIe expansion slots, vertical insert |
| Standard Color  | Black  |
| Dimension       | 650 x 428 x 88.5 mm                                    |
| Weight          | 8.5 Kg   |

## POWER SUPPLY

|                       |                           |
|-----------------------|---------------------------|
| Input Voltage         | 90V ~ 264V AC, full range |
| Input Frequency       | 50 ~ 60Hz                 |
| Input Current         | 10A@110V, 5A@240V         |
| Efficiency            | > 80%                     |
| MTBF                  | 100,000 hrs               |
| EMI & Safety Approval | CE, FCC                   |

## ENVIRONMENT

|                       |  |
|-----------------------|--|
| Operating Temperature | 0°C ~ 50°C   |
| Storage Temperature   | 0°C ~ 70°C   |
| Relative Humidity     | 5% ~ 95%, non-condensing   |
| Vibration             | 5~7 Hz: 0.5" double amplitude displacement<br>7~2000 Hz: 1.5g acceleration |



**Portwell, Inc.** Headquarters  
No. 242, Bo'AI St., Shu-Lin Dist,  
New Taipei City 238, Taiwan  
Tel: +886-2-7731-8888  
Fax: +886-2-7731-9888  
E-mail: [info@portwell.com.tw](mailto:info@portwell.com.tw)  
[www.portwell.com.tw](http://www.portwell.com.tw)

**American Portwell**  
(Fremont, CA)  
Tel: +1-510-403-3399  
E-mail: [info@portwell.com](mailto:info@portwell.com)  
[www.portwell.com](http://www.portwell.com)

**Portwell UK Ltd.**  
Tel: +44(0)1235-750-760  
E-mail: [info@portwell.eu](mailto:info@portwell.eu)  
[www.portwell.eu](http://www.portwell.eu)

**Portwell Japan, Inc.**  
(Tokyo)  
Tel: +81-3-6902-9225  
E-mail: [info@portwell.co.jp](mailto:info@portwell.co.jp)  
[www.portwell.co.jp](http://www.portwell.co.jp)

**Portwell Japan, Inc.**  
(Osaka)  
Tel: +81-6-4807-7721  
E-mail: [info@portwell.co.jp](mailto:info@portwell.co.jp)  
[www.portwell.co.jp](http://www.portwell.co.jp)

**European Portwell**  
Tel: +31-252-620790  
E-mail: [Info@portwell.eu](mailto:Info@portwell.eu)  
[www.portwell.eu](http://www.portwell.eu)

**KIOSK Embedded Systems GmbH**  
Tel: +49-8152-3962-500  
E-mail: [Info@portwell.eu](mailto:Info@portwell.eu)  
[www.portwell.de](http://www.portwell.de)

**Shanghai Portwell**  
Tel: +86-21-5771-2505  
E-mail: [info@portwell.com.cn](mailto:info@portwell.com.cn)  
[www.portwell.com.cn](http://www.portwell.com.cn)

**Portwell Korea, Inc.**  
Tel: +82-31-450-3043  
E-mail: [info@portwell.co.kr](mailto:info@portwell.co.kr)  
[www.portwell.co.kr](http://www.portwell.co.kr)

**Portwell India Technology Private Limited**  
Tel: +91-80-4168-4255  
E-mail: [enquiry@portwell.in](mailto:enquiry@portwell.in)  
[www.portwell.in](http://www.portwell.in)

