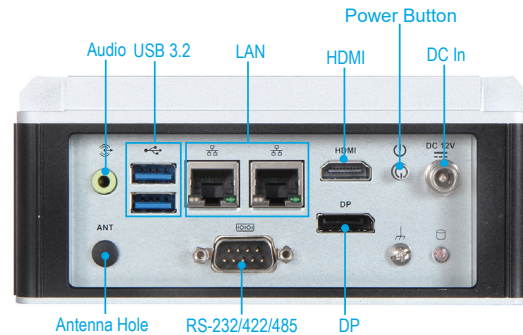
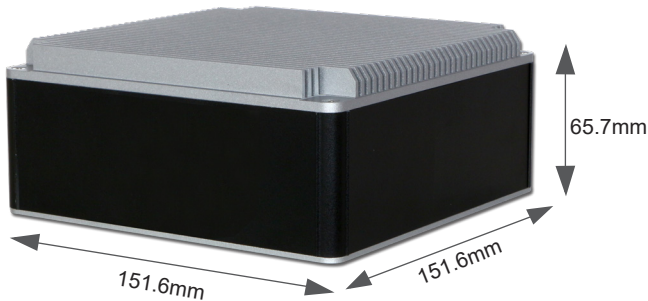
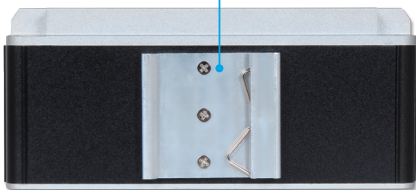


# WEBS-21J0-ASL

Embedded Rugged Fan-less System with Intel Atom® X7000RE Series SoC based NANO-ITX Board



DIN-Rail Mounting Bracket (optional)



The WEBS-21J0-ASL takes advantage of Intel Atom®X7000RE/Intel® processors technologies that can support one DDR4 memory and one SATA Ports for storage. Support Two 2.5G Gigabit Ethernet ports, One M.2 E Key, One M.2 B Key socket. The WEBS-21J0-ASL is an ideal platform for IoT applications, such as retail, digital signage.



## System

M/B	NANO-6064-ASL
CPU	-Intel Atom® X7000RE Series Processor ( Up to 9W)
BIOS	AMI uEFI BIOS
Memory	- 1x non-ECC DDR4 3200MT/s SO-DIMM up to 16GB - Support In-Band ECC
Storage	- 1x SATAIII ports - 1x M.2 B key 2280 (SATAIII)
Watchdog Timer	Programmable Watchdog Timer
H/W Status Monitor	System monitor (Voltage and Temperature)
Expansion	- 1x M.2 E Key 2230 - 1x M.2 B Key 3052+2280 (Share with M.2 2280 SATAIII socket)

## External I/O

Serial Port	- 1x RS- 232/422/485 port (selectable via BIOS)
Display	- 1x HDMI ( HDMI 2.0b,4096x2160@60Hz) - 1x DP (DP 1.4,4096X2304@60Hz)
USB	- 2x USB 3.2 Gen2 (Optional kit: additional 2x USB 3.2 Gen2)
Audio	Audio Jack with Line-out with Realtek ALC897 Audio controller
Ethernet	- 2x Intel® 2.5GbE Ethernet controller (I226-IT)
Other	TPM 2.0 on board

## Power Supply Unit

Power Input	DC 12V input
-------------	--------------

## Environmental

Operation Temperature	-40°C ~ 50°C ( with M.2 SSD,2.5"SSD, HAILO 8 ) -40°C ~ 60°C (with 2.5" SSD,HAILO 8, without M.2 SSD)
Storage Temperature	-40°C ~ 85°C
Relative Humidity	40°C, 95%RH non-condensing
Operation Vibration	3Grms/10-500Hz, IEC 60068-2-6
Operation Shock	50G, 11 msec, IEC 60068-2-27

## Mechanical

Dimension	151.6 (W) x 151.6 (D) x 65.7 (H) mm
Weight	1.4 Kg
Mounting	Wall, DIN-rail mounting

## FEATURES

- Support low power Intel Atom®X7000RE Series SoC
- Up to 16GB DDR4 3200MT/s non-ECC SO-DIMM
- Support one DP and one HDMI display
- Support One M.2 E Key, One M.2 B Key socket
- Support one RS- 232/422/485 port (selectable via BIOS)
- One Antenna hole for WiFi module to usage
- Support a wide -40°C to 60°C industrial temperature range
- Optional preassemble HAILO 8 AE key module

