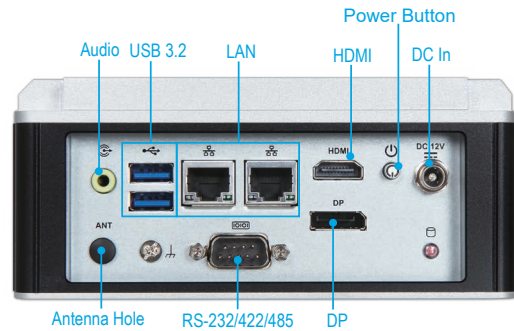
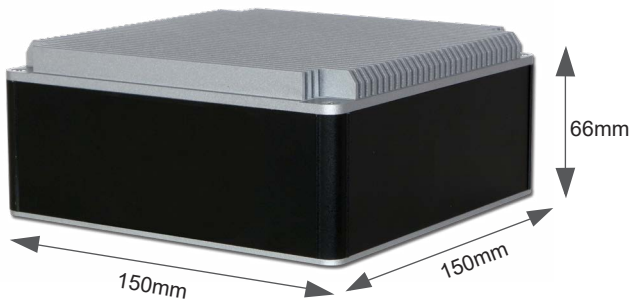
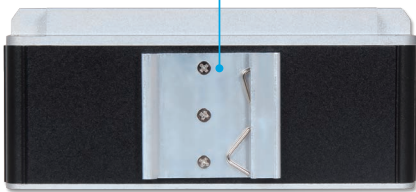


# WEBS-21J0

Embedded Rugged Fan-less System with Intel Atom® X7000E Series SoC based NANO-ITX Board



DIN-Rail Mounting Bracket (optional)



The WEBS-21J0 takes advantage of Intel Atom® X7000E / Intel® processors N-Series / Intel® Core™ i3 N-Series Processor technologies that can support one DDR4 memory and one SATA Ports for storage. Support two Gigabit Ethernet ports , One M.2 E Key, One M.2 B Key socket. The WEBS-21J0 is an ideal platform for IoT applications, such as retail, digital signage.

## FEATURES

- Support low power Intel Atom® X7000E and high performance Intel® Core™ i3 N-Series SoC
- Support 16GB DDR4 3200MT/s non-ECC SO-DIMM
- Support one DP and one HDMI display
- Support one M.2 E Key, One M.2 M Key socket
- Support one RS- 232/422/485 port (selectable via BIOS)
- One Antenna hole for WiFi module to usage
- TPM 2.0



## System

M/B	NANO-6064
CPU	- Intel Atom® X7000E Series Processor ( Up to 12W) - Intel Processor N Series - Intel® Core™ i3 N-Series Processor (Up to 15W)
BIOS	AMI uEFI BIOS
Memory	- 1x non-ECC DDR4 3200MT/s SO-DIMM up to 16GB - Support In-Band ECC
Storage	- 1x SATAIII ports - 1x M.2 B key 2280 (SATAIII)
Watchdog Timer	Programmable Watchdog Timer
H/W Status Monitor	System monitor (Voltage and Temperature)
Expansion	- 1x M.2 E Key 2230 - 1x M.2 B Key 3052+2280 (Share with M.2 2280 SATAIII socket)

## External I/O

Serial Port	- 1x RS- 232/422/485 port (selectable via BIOS)
Display	- 1x HDMI ( HDMI 2.0b,4096x2160@60Hz) - 1x DP (DP 1.4,4096X2304@60Hz)
USB	- 2x USB 3.2 Gen2
Audio	Audio Jack with Line-out with Realtek ALC897 Audio controller
Ethernet	- 2x Intel® 2.5GbE Ethernet controller (I225-LM) - 2x RJ45 connectors
Other	TPM 2.0 on board

## Power Supply Unit

Power Input	DC 12V input
-------------	--------------

## Environmental

Operation Temperature	0°C ~ 50°C
Storage Temperature	-40°C~85°C
Relative Humidity	40°C, 95%RH non-condensing
Operation Vibration	3Grms/10-500Hz, IEC 60068-2-6
Operation Shock	50G, 11 msec, IEC 60068-2-27

## Mechanical

Dimension	150 (W) x 150 (D) x 66 (H) mm
Weight	2 Kg
Mounting	Wall, DIN-rail mounting

